

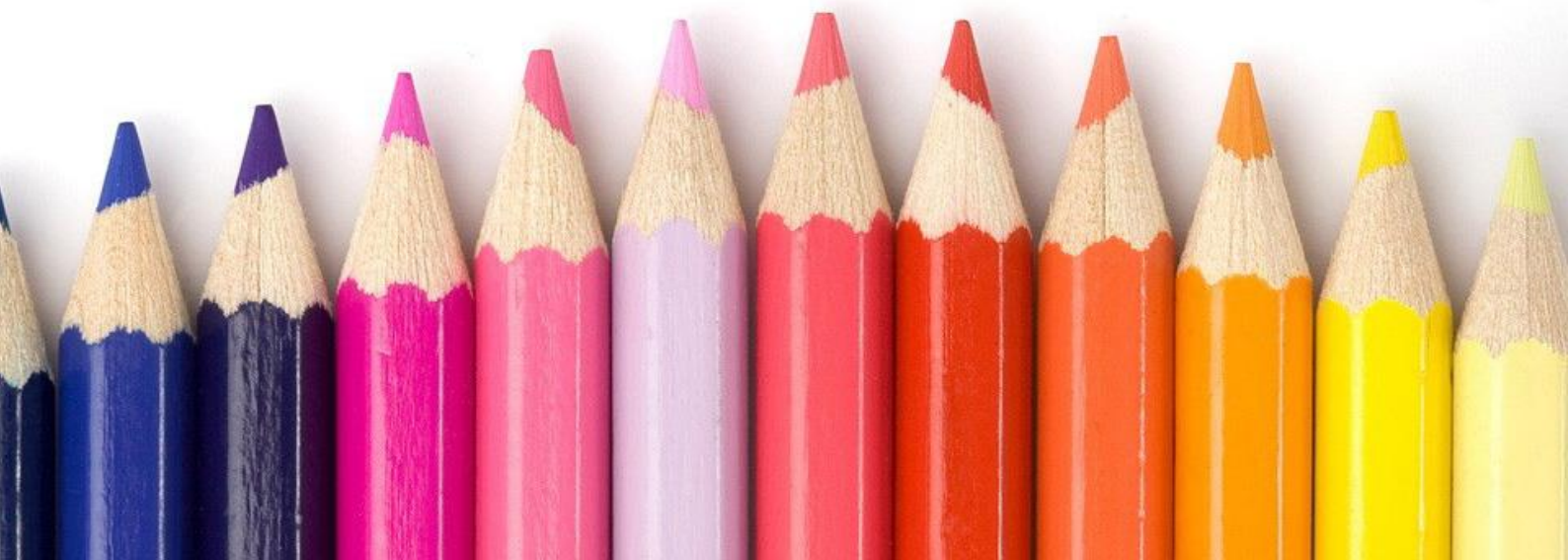


Meadowhead Community Infant School & Nursery

We are a **GOOD** school - Ofsted 2022



One School – One Family





Headteacher's Welcome

Welcome to Meadowhead Community Infant School and Nursery.

Thank you for taking the time to read our prospectus. It is intended to show how our amazing school works and to explain some of the amazing activities that go on in our classrooms. It also contains information about the routines and procedures we have to make daily life run smoothly. We hope that it answers many of your questions and reflects the pride that we all have in our wonderful school.

We are a two form entry Infant School and Nursery with a brilliant learning environment – both inside and out. We are an incredible nurturing school where all children are embraced as individuals and strongly encouraged to achieve their potential. We deliver a broad and balanced curriculum giving children the knowledge, skills and experiences they need to go on and be successful later on in life. We have a strong focus on developing children's reading skills from an early age and providing a range of valuable and worthwhile experiences for our children.

Parents are encouraged to be active partners in their children's learning, through effective communication and regular information about children's learning and progress.

If you are considering applying for a place at our school for your child, please contact us and make an appointment for a tour of the school. This will give you the opportunity to meet us and see the children and staff at work. It is generally best if you can arrange a visit during the school day so you can come and get a 'feel' for our school and see for yourself how happy, safe & engaged the children at Meadowhead are. It will also give you the opportunity to ask questions and discuss any concerns you may have. I look forward to meeting you and hope that you will enjoy being part of the Meadowhead Family.

We would love you and your family to come and join our school family.

James Waddington

Headteacher



About Our School

Meadowhead Community Infant School and Nursery is situated in the Mill Hill district of South West Blackburn.

Meadowhead Infants has a Nursery and we offer 15 or 30 hour places subject to availability and eligibility.

The Reception admission number is 60, although our numbers do fluctuate from year to year. We have 6 classes in school, so Reception children are placed into 2 classes, depending on numbers.

All our staff have appropriate qualifications for their roles and work as teams within the classes.

At the end of Y2 our pupils, in the main, apply to transfer to Meadowhead Junior School. Staff at both schools work closely together to ensure the children's progress is continuous and that the transition to the next key stage is as seamless as possible.

The School Environment

The school is a warm and welcoming environment with very good facilities. It is set in spacious and attractive grounds, which provide brilliant opportunities for Outdoor Learning. There is an allotment, wooded area and two large playgrounds surrounded by grass and a garden area planted with a range of shrubs, climbers and trees. There is a tyre balance and tables which are used at playtimes and lunchtimes. We also have a Forest School provision.

Our Nursery and Reception classes have their own outdoor play areas. We have access to the junior school's large field for special sporting events.

The classrooms are all well-resourced and there is a hall, a library, a cookery room and an additional classroom for group teaching.

School Values



What Ofsted said:

"Pupils skip happily into school."

"Reading is at the heart of the curriculum. Children are surrounded by a wonderful selection of book to entice them to read. The school library us a magical place where pupils can snuggle down with a favourite story or choose a book to take home."

"Pupils with SEND are identified quickly. Leaders and staff are skills in making adaptionns so that these pupils can access the curriculum with their classmates"

One School - One Family

Learning, Caring and Growing Together

At Meadowhead Community Infants School and Nursery we aim to ensure:

- Each child is respected as an individual
- High expectations so every child achieves their full potential
- All children develop a positive attitude towards education
- A nurturing environment providing 'moments of joy'
- Children embedded our school values of ambition, friendship, kindness, respect and teamwork
- We work closely with our families

Meet The Team.....



Senior Leadership Team	
Mr. J. Waddington (Headteacher)	
Miss S. Allen (Deputy Headteacher)	Mrs. J. Strahan (SENCo)



Teaching Staff	
Mrs N. Aspinall	Mrs E. Baker
Mrs. S. Farrer	Miss O. Gough
Miss G.McHale	Miss R. Rudge



Teaching Support Staff	
Mrs. M. Calvert	Mrs. S. Nelson
Miss S Critchley	Mrs. P. Noonan
Mrs G. Entwistle	Mrs. J. Marshall
Mrs. G. Gill	Mrs. J McNally
Miss N.Gill	Miss B. Walsh
Miss M. Heywood	Miss L. Waring
Miss K. Lord	Mrs. N. Wiggins
Miss S. Morris	



School Office
Mrs A. Sabat and Miss L. Connolly



Pupil Wellbeing Co-Ordinator
Mrs. K. Crossley



Welfare Team	
Miss S. Critchley	Mrs. S. Hudghton
Mrs. G. Entwistle	Miss D. Kirby
Miss E. Clinton	Miss K. Lord
Mrs. G. Gill	Miss H. Thompson
Miss N. Gill	



Premises Team	
Mr. N. Stonham	Mrs. S. Hudghton
Miss H. Thompson	



School Organisation

Meadowhead Infants is a Community School. The children are in single year group classes of mixed ability, with three classes of each year-group. Each class has appropriately trained support assistants.

In Reception, Year 1 and Year 2 class sizes are no more than 30.

Our Nursery accommodates 39 pupils for the morning session and has a higher staff ratio than in the main school.

At present the internal organisation of the classes is as follows:

Foundation Stage (Ages 3-4)	Nursery
Foundation Stage (Ages 4-5)	Reception Class
Key Stage 1 (Ages 5-7)	Year 1 & Year 2

Children may also be taught by teachers other than their own class teacher in an attempt to use a teachers particular talent - this could be in areas such as PE, games, art and music.

The School Day

School starts at 8:45am

All children must be brought to school and collected by a responsible adult.

Nursery

The nursery day starts at 8.45am, finishing times depend on how many hours your child attends.

Reception, Year 1 & Year 2

Morning Session:	08:45am – 12:00noon
Lunch	12:00noon – 1:00pm
Afternoon Session:	1:00pm - 3:10pm

Staff members will be at the classroom doors at 8:45am to welcome children into school. At 8:55am and for the children's safety the classroom doors will be locked. After 8:55am the only access to the school is through the main entrance where the children need to be signed in.

Attendance & Punctuality

We want all children to feel happy at school. Good attendance and punctuality will help your child settle and make friends. Please try to ensure your child attends every day. It is also very important that school knows who is picking up your child each day. School regularly monitors attendance and punctuality. If there are any concerns, letters will be sent out to remind parents of their responsibilities. The school works closely with the Local Authority Education Welfare Officer to ensure good attendance.

Emergency contact

Please make sure the school has all current up to date telephone numbers. We use a text service, so one priority mobile number is needed to receive important information from school. We may also need to contact you urgently if your child is unwell.

Safe Travel

Parking near to school is very tricky!!!! If feasible, why not leave the car at home and walk? Please park well away from the roads where children cross and from the school entrance. When walking around the outside of the school, please ensure you and your children use the designated path and not the driveway.

- Please be considerate and do not park across neighbours' drives
- The car park behind the school belongs to the Bentham Road Health Centre and we discourage parents/carers from parking there
- The school car park is for staff only and the gates are kept closed

Absence

If your child is poorly, please telephone the school office and let us know. If we have not heard from you by 9.10am we will send a text to remind you to call in. Punctuality and regular attendance are important if your child is to make good progress and develop friendships.

Appointments

All medical appointments should be scheduled outside of school hours where possible. If your appointment is during school time, please inform the school office as early as possible and provide an appointment card to verify the date and time.

Requests for Authorised absence in term time

- Forms for requesting a leave of absence are available from the school office. In line with government policy, requests will not be authorised if: The circumstances are not exceptional
- The request is for a period during Year 2 SATs week
- The child has a poor attendance record.

This is in line with our school policy.

There is a strong link between attendance and performance even at this age. We are always available to talk to you if you have problems concerning your child's attendance. If we have concerns we will contact you by letter and in cases of persistent absence – less than 90% attendance – you will be contacted by our Pupil Well-being Co-ordinator. In ongoing cases you will be referred to the Local Authority.

We award Termly Attendance Certificates to those children with excellent attendance, as well as weekly Golden Tickets for those completing a full week in school.





Getting Ready to Start School

We will do all we can to ensure your child has a good start to their education at Meadowhead Infants. There are a number of things you can do at home however, that will help to give your child as good a start as possible.

- Speak with your child as much as possible in order that s/he is hearing as many words as possible. A child with a broad vocabulary finds it easier to speak with others and to learn to read and write.
- Answer any questions your child asks you (however annoying this might be!), because it shows they are curious and wanting to learn. This is a good thing.
- As far as possible, make sure that your child is happy to be in the company of other children and adults. This will make it easier for them when you leave them at school.
- Start to teach them to share and wait their turn. It can be very difficult for a child to share things with brothers and sisters, but even more difficult to share things with 25 other children!
- Make sure they can do some jobs without needing help from an adult such as dressing themselves, going to the toilet on their own, blowing their nose etc.
- Talk about school and teachers in a positive way. We want the children to look forward to coming to school as when children are happy and feel secure, they learn more effectively.
- When talking with your child, try to use basic mathematical language e.g. count the number of stairs on the way up to bed, count out enough forks and knives for everyone when getting ready for tea, refer to size of things e.g. do you want to big apple or the little one and talk about shape e.g. the DVD is a circle shape.
- Show your child that writing is all around them e.g. supermarkets, the names of local streets, shop names etc.

It is important that the children receive as much support from home as possible; asking them if they've had a good day shows you are interested in their school day and gives them a chance to talk things through with you. Try to listen to them read their reading books for 5-10 minutes each night- this really helps to improve a child's reading ability, and always speak to your child's teacher if you have any concerns at all about anything. The sooner a problem is addressed the better and it is good for your child to see home and school working closely together.



Uniform

At Meadowhead, we pride ourselves on our smart appearance. School uniform can be purchased from Whittakers School Wear in Blackburn town centre.

Please ensure all uniform is carefully marked with your child's name.

Uniform

Red Sweatshirt/Cardigan

White Polo Shirt:

Grey Skirt/Trousers/Shorts

Sensible, sturdy, school shoes should be worn. Boots can be worn in the winter months for outdoors but children must change into pumps or school shoes inside school.

In summer, girls may wear an alternative uniform of a red/white gingham dress.

We expect all children to be dressed appropriately and to be clean and neat in appearance. In winter, children need a warm coat, hat and gloves. In the Summer a suitable sunhat is needed.

P.E. Kit

T-shirt: White

Shorts: Black

Pumps: Black

Please make sure your child comes to school in their P.E kit on their PE day. Children without the correct attire may not be able to participate.

Jewellery

For safety reasons we do not allow any jewellery to be worn in school, at any time. I ask that parents support the school with this important rule for the wellbeing of your children.



Health

Please let the school know if your child has any health issues. Any medicines to be taken must be discussed with the Headteacher and signed for by a parent at the office. Young children need at least 10 hours sleep every night, in order for them to learn and reach their potential at school so please ensure your child has a good bedtime routine.

General Medical Matters

It is important that we have a knowledge of any special medical information concerning your child. This should be entered in the appropriate space on the child's school admission form. We have regular visits from the school nurse who conducts medicals in accordance with the Area Health Authority Regulations. Parents are notified of specific medical examinations and are normally invited to be present. These are done through formal appointments and attendance is the parents responsibility.

Medication

School is not a place for children who are ill. However, there are some instances where a child recovering from a short illness is considered by his/her doctor to be well enough to return to school although still receiving a course of medication. Non-prescribed medication will not be administered by staff and must not be sent to school. Parents **MUST** complete a long term or short term medical form for all medication to be administered in school. All medication to be administered is be logged by the staff member who has administered it.

Guidelines for Medication

1. The medication should be brought to school by the parent and not the child. It should be delivered personally to the Headteacher or Office Manager.
2. Medication must be clearly labelled with contents, owners name and dosage or staff will not be administer it.

Asthma

Asthma inhalers, clearly labelled with your child's name, will be kept in the classroom and staff will supervise children taking inhalers themselves.

For further information please see our Asthma policy on our website.

Allergies

Please advise the school of any allergies your child may have and continue to update us of any further developments.



Accidents in School

When large numbers of children are playing together, it is inevitable that there will be bumps and grazes, which will be dealt with in school with a letter being sent home informing you of the incident and how we have dealt with this. Injuries of a more serious nature are thankfully very rare.

In the event of an accident at school we will make every effort to contact you before seeking further medical advice. It is vital, therefore, that parents advise us of any change in telephone numbers and return Data Checking Forms to school.

Accidents at Home

School must be notified of any accidents that occur outside of school. A form detailing any injuries must be completed before the child can attend school. A form can be collected from the School Office.

Breakfast Club

Breakfast Club opens at 7.45am and is supervised by school staff. A range of healthy breakfasts are available and is included in the cost of £1 per day.

(Your child must arrive before 8.20am if they require breakfast)

After School Club

We run a range of after school clubs at various times throughout the year. Keep an eye out for details via the newsletter or a letter home from class.

After school child care is now available at our school. It is run externally by Schools Out Holiday Squad and for further information and to sign up please visit www.schoolsoutholidaysquad.co.uk/ for further information.

School Meals

Reception and Key Stage 1 children are entitled to free school meals. They are offered a choice of hot meals (Including a vegetarian option). Fruit and salad are always available as an extra or an alternative.

There is a charge for our Nursery children who stay for school dinners which is £2.70 per day.

Snacks/Milk

A healthy snack is provided for all infant school children free of charge. Milk is chargeable at £12 per year. Milk money should be paid in full at the beginning of the school year. You may be entitled to free school milk if you receive certain benefits, please contact the Local Authority if you think you may be eligible

<https://www.blackburn.gov.uk/schools-and-education/school-meals>

Alternatively, you can speak with our Pupil Wellbeing Co-Ordinator who can offer further advice.

We provide snack for our nursery children and ask for a £5 per half term voluntary contribution.



Events for Parents

- Friday's "Golden Awards" assembly –this is a time when we celebrate children's achievements in and out of school.
- Thursday assembly – class assemblies. Dates will be given by each class teacher
- We have a number of other events during the school year, e.g. Harvest assembly, Nativity, Mother's day assembly, Leavers' Assembly and others that will be arranged throughout the year.
- Planned open mornings/afternoons each term, where parents/carers are invited into school to watch how their children learn.

A newsletter is published at the end of each half-term and is available to read on our website and Facebook page.

Home School Partnership

As we want to work in close partnership with parents, you will be asked to sign a Home School Agreement on your child's entry into Meadowhead.

Homework

Children work very hard at school and can go home feeling very tired. We do provide opportunities in all year groups for children to continue their learning at home. This should be an enjoyable experience for child and parent alike!

10 minutes each evening for Reception children will make a huge difference to your child's progress.

15 minutes each evening for Y1 & Y2 children is all that is required.

- Reception homework – Learn sounds, and later practise their reading book. Fun maths and topics activities
- Y1 & Y2 – Reading practice and research information for topic work.
- Strong school book bags are available to buy from the school office – price £6.50

Information about the topics children are learning will be displayed on classroom doors and a half termly curriculum newsletter will be sent home by each class. Parents will be informed of ways in which they can support their child's learning.

Teaching and Learning and the Curriculum

We want our children to be successful learners, confident individuals and responsible citizens. We encourage and support each child to achieve their very best. We aim to create an atmosphere of trust, challenge, openness and respect which encourages and enthusiasm for learning and critical thinking.

Through an active curriculum we encourage children to explore, take risks, investigate, be creative, and discover the world around them. They are supported to respond to challenge within a learning environment that is secure, enjoyable, and sensitive to individual needs.

We give them time for independent thought and action as well as time to work together. We help them to take responsibility for their own learning through shared and clear learning objectives and success criteria. Positive self-esteem is encouraged by providing challenging, achievable learning experiences.

Careful assessment ensures a personalised approach to teaching and learning and diversity and individuality are celebrated, reflecting our commitment to equality of opportunity.

Early Years Curriculum

The curriculum in Nursery and Reception is based on the Early Years Foundation Stage (EYFS) Statutory Framework.

This provides a framework for realistic and challenging experiences that meet the different needs of all our children. It includes seven areas of learning:

Prime Areas of Learning

- Communication and Language, Physical Development, Personal, Social and Emotional development

Specific Areas of Learning

- Literacy, Mathematics, Understanding the World and Expressive Arts and Design

The children are actively engaged in working towards the Early Learning Goals. Cross-curricular links are made through carefully planned topics. Learning is achieved through practical and enquiry based activities, as well as whole and small group teaching sessions. Cooking, gardening, role play, singing, movement and dance, making, building, drama and role play are included in the curriculum.

Key Stage 1 (Years 1 and 2)

We want our curriculum to be fun and creative and we make cross-curricular links through a topic-based approach. Our lesson planning follows the National Curriculum learning objectives and we also have end of year 'non-negotiables' which are skills and knowledge we expect all our pupils to acquire. Children contribute to short-term planning by discussing what they already know and what they would like to find out.

The National Curriculum subjects for Key Stage 1 are :

**English, Mathematics, Science, Computing , History, Geography, RE, Design Technology, Art and Design
Physical Education (PE), Music, Personal, Social, Health and Economic and Collective Worship**

The aim of our collective worship policy is to provide opportunities for pupils to:

- Worship God
- Reflect on values that are of a broadly Christian nature and their own beliefs
- Develop a community spirit, a common ethos and shared values
- Consider spiritual and moral issues
- Respond to the worship offered

Statutory Duty of School: We provide daily collective worship for registered pupils. Parents have the right to withdraw their children from RE lessons and Assemblies in consultation with the Headteacher.

Special Educational Needs

At Meadowhead Infant School, we are proud to be an inclusive school. We are experienced in supporting children with a variety of differing needs e.g. autism, ADHD, dyslexia etc. Our Special Educational Needs & Disabilities Co-ordinator (SENCo) works closely with our Pupil Well Being Co-ordinator in order to support families as well as pupils as much as possible. The SENCo also has close links to support agencies that can help us help your child as effectively as possible. These agencies include Speech Therapists, Paediatricians, the Inclusion Support Service and an Educational Psychologist.

Children with special educational needs perform well at Meadowhead Infants, and parents and staff are proud of the progress they make. Regular pupil progress meetings between staff ensure that any child causing a concern can be identified as soon as possible. If appropriate, children take part in intervention work to improve any areas of learning they find challenging. Each classroom displays a visual timetable in order that children are familiar with the order of the day. School rules and expectations of behaviour are also displayed in visual form so that all children can fully understand them.

Our school local offer of special educational needs provision is available on our website.

If ever you have a concern about your child's development or progress, please do not hesitate to contact the class teacher or SENCo.



Behaviour

Staff expect a high standard of behaviour from all our children and the School Values help us to ensure this. We help children to develop self-discipline by considering other's feelings and points of views. We remind children of the need to work and play well together. Our emphasis is on acknowledging good behaviour with praise and rewards. This positive approach encourages children towards higher standards and provides reinforcement and motivation that helps to raise children's self-esteem. We operate a zero tolerance to violence and bullying in our school. What some children call bullying can be natural exuberance from young children, but we will always investigate and attend to incidents that have caused upset and anxiety.

As parents/carers, your contribution is vital in ensuring your child enjoys learning and reaches their full potential while at school. Staff make sure you are kept informed of any issues that may arise at school. We would appreciate it if you could keep us informed of any aspects in your child's life that may affect their behaviour or learning.

Communication

There are many ways that School and Home can keep in touch.

Parents evening will take place regularly over the course of a school year giving you the opportunity to find out how your child is developing. School will issue a report once a year detailing the progress that has been made by your child. Letters, newsletters and texts with regular updates on news and events will be sent frequently, throughout the year.



Safeguarding and Child Protection

All schools have a duty of care to keep children safe and to protect them from harm. It is the responsibility of all people working with children to share any welfare concerns. We play a vital role in keeping children safe and in the detection and prevention of child neglect and abuse. Within every school, there is a designated teacher responsible for Safeguarding and Child Protection. At Meadowhead Infant school this is the Headteacher. The school will take every reasonable action to ensure the safety of its pupils at all times.

To further support families and protect children from harm, neglect and abuse, school employs a Pupil Well-Being Co-ordinator. This role is central to ensuring that children are able to come to school each day, ready to learn and play. Our Pupil Well-Being Co-ordinator is a real asset to the staff and families at Meadowhead Infants and has many years of experience, supporting families to ensure children are safe, happy and healthy. If parents require information, support, guidance or advice, please ring school to speak with our Pupil Wellbeing Co-ordinator.

All adults working with children in school have been cleared by an enhanced DBS check.

Risk Assessments

Risk assessments are made whenever the school feels children are more vulnerable to accidents, in or out of school. This includes times when children go on walks around the community or further away.

Complaints

If parents have any cause for concern they are asked to come into school to resolve the problem as soon as possible with the Headteacher and staff. In the unlikely event that the concern cannot be dealt with, the Governors, then the Local Authority can be contacted. Further information regarding the school and Local Authority complaints procedure can be obtained from the Headteacher.

Our Governing Body

Our school governors play a very significant part in running the school. There is a full governing body meeting once every term. Minutes of governing body meetings are available on request. Anyone interested in joining the Governing



Headteacher Mr. J. Waddington

Meadowhead Community Infant School & Nursery

Shorrock Lane

Blackburn

Lancashire

BB2 4TT

01254 202600

www.meadowheadinfants.co.uk

office@meadowheadinfants.blackburn.sch.uk

Scan to visit



the school's website

